

PRODUCT OVERVIEW 2018/2019



OCTAVE

MODERN CLASSIC



Noble & elegant

With their timeless design,
OCTAVE components even fit
in ultra-modern home interiors

The best amplifier...



Hofmann senior and associate at OCTAVE's in-house transformer winding plant



One aspect of the superior natural OCTAVE sound: **Precisely matched tubes**

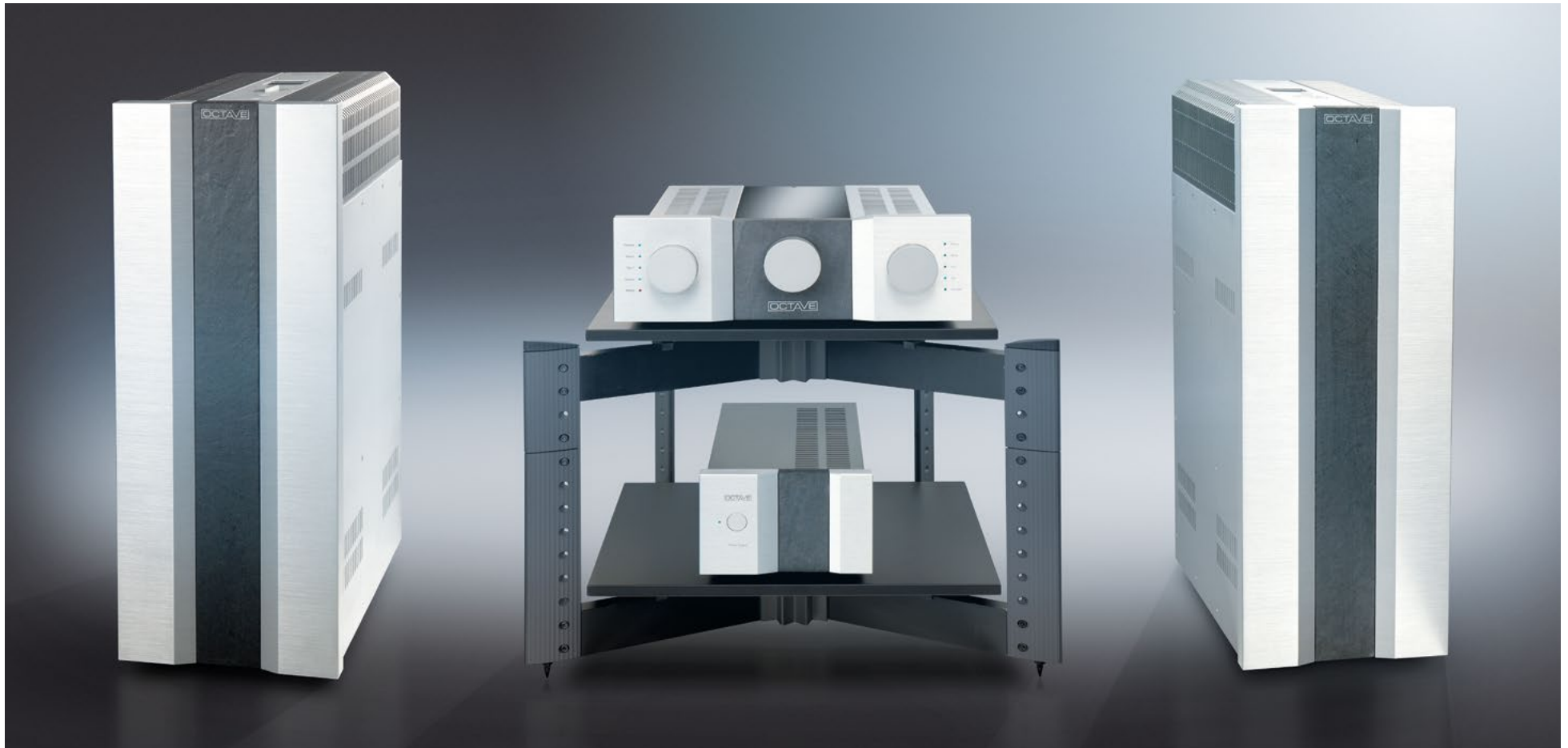


CEO and developer
Andreas Hofmann

... can only be a tube amp, because tubes sound more natural and refined than solid state designs. But replicating the old trusted circuits is not enough. Known limitations must be overcome, as modern tube technology requires great knowledge, ongoing development, precisely matched components, a technically optimized environment and the most exacting craftsmanship. We at OCTAVE wind our exceptional transformers in-house and meticulously build each amplifier by hand. We have developed an innovative circuit design guaranteeing optimum security and playback precision. That's the way we have operated for more than 30 years now, because we know one simple truth: it's the only manner to achieve ultimate sound quality.



Jubilee



State of the art

A project without consideration of expense or time constraints: For the **Jubilee series**, OCTAVE developed the hybrid circuit which unites classic valve technology to the modern world. The preamplifier **Jubilee Preamp** with external power supply is a virtually noise-free audiophile dream, and all OCTAVE amplifiers refute the prejudice of tube amps having low power. With its 400 watts, the **Jubilee Mono SE** drives each speaker to peak performance – guaranteed.



Preamplifiers

HP 700

Unmatched sound quality. Thanks to its modular architecture, the HP 700 is one of the most versatile preamplifiers in the world. The valve-based Tone Control option guarantees consistency of the sound. It's frequency-compensated balance control eliminates any sound shifts. A total of three preamp output stages can be utilized for separate rooms, different speakers or bi and tri-amping.



HP 300 SE



Ultra low-noise preamplifier with balanced inputs and outputs, external power supply, and an amazingly natural and refined sound.

Phono Module



In base form, a most excellent phono preamp for MM and MC pick-ups. Thanks to the modular concept, it is also configurable as a top preamplifier.

Phono EQ.2



Powerful sound and versatile connectivity: Stand-alone (solid state) phono stage for MM and MC.

Power amplifiers



MRE 220

The refinement, elegance and naturalness of a modern tube plus the power and substance of a superior solid state amplifier – these are the sonic attributes of the **MRE 220** mono amplifier. The combination of four **KT 120** power tubes per channel and an ultra-refined power supply delivers over 200 watts per channel with unbelievable power and incredible control.



RE 320

The modern, new **RE 320** stereo amplifier is optimized for the powerful KT 150 tubes, delivering up to 130 watts per channel – with incredible control, tremendous resolution and excellent dynamics.

Integrated amplifiers

V 80 SE

The **V 80 SE** is the most powerful integrated amplifier of our program and absolutely state of the art. The **KT 150** power tubes bestow it with the authority of more than 120 watts per channel. And it is the only OCTAVE push-pull integrated which includes our excellent headphone amplifier. Thus the V 80 SE dramatically raises the bar for technology, performance and flexibility in the category of high end integrated amplifiers.

V 110 SE

The **V 110** was Octave's first integrated amplifier model to deliver over 100 watts per channel. With the new OCTAVE Dynamic Technologies (ODT) and an innovative adjustable damping factor, the all-new **V 110 SE** allows the most precise match to any loudspeaker – regardless of its impedance character and technical specifications.



V 70 SE

A larger version of the **V 40 SE** offering the same natural and detailed performance with even more power, control and substance with an XLR input and the option to add an internal phono board (MM or MC).



V 40 SE

Although it is the smallest amplifier of our program, its 40 watts per channel, impressive low noise and exceptionally natural sonic character ensure a sound quality that is simply great (pictured with **KT 88**).



OCTAVE V 16 Single Ended integrated amplifier

The founding principle at OCTAVE has always been to apply modern innovations to classic tube technology.



The **V 16 Single Ended** is based on SE (single ended) Class-A circuitry which is desirable for its naturally harmonic sonic signature and extremely lucid midrange. The **V 16 Single Ended** performs without any trace of hum or noise and exhibits a flat frequency response between 10 Hz – 80 kHz. This exemplary performance makes it a perfect match for high-efficiency loudspeakers as well as a world-class headphone amplifier.

OCTAVE has equipped the **V 16 Single Ended** with three inputs (1 x XLR and 2 x RCA), one pair of loudspeaker outputs, two headphone outputs (6.3 mm jack and 4 pin XLR) and an optional Pre-Out feature. Thus the **V 16 Single Ended**

can be used to drive hybrid systems (with active bass) or conventional bi-amped setups.

The long development process of the **OCTAVE V 16 Single Ended** has surely paid off: an uncompromising single-ended Class-A integrated amplifier (offered in noble Ice Grey or Metallic Black finish to fit in any modern living room) that delivers ultra-quiet operation highlighted by deep bass, a natural midrange and silky-smooth highs combined with an unsurpassed degree of reliability and longevity.

A pure, modern classic amplifier in every regard.



Add On Modules



Black Box ...

... is an external power supply upgrade for the **V 40 SE, V 70 SE, V 110 SE, V 80 SE, RE 320,** and the **MRE 220**. It is a circuit with electrolytic capacitors, which increases the power supply to the power amplifier and stabilizes the output.



Super Black Box ...

... is – similar to the Black Box – an external power supply upgrade with an even higher capacity for OCTAVE's **V 40 SE, V 70 SE, V 110 SE, V 80 SE** integrated amplifiers and **RE 320** and **MRE 220** power amplifiers. It upgrades the sound with an even greater level of power and control.



Black Box Preamp ...

... is an external power supply upgrade for the **Phono Module** containing a sophisticated circuit with high quality electrolytic capacitors to enhance the power supply and further stabilize it against occurring mains fluctuations.



OCTAVE Filter 3-P

To eliminate the problem of propagation of conducted EMI, Octave has developed the **Filter 3-P**, a filtering component that operates directly in the path of interference, namely the analog signal cabling. The **Filter 3-P** is a passive filter system designed to be connected between the source and pre- or integrated amplifier. It is fitted with single-ended RCA or balanced XLR connections. Thanks to the innovative filter technology, the same high level of effect is achieved via either RCA or XLR.



Input modules

The **HP 700** and **Phono Module** modular preamplifiers are comprehensively expandable to every requirement through OCTAVE's various module options:



IN1: MM RCA ...

... Is an analog MM phono input with two input impedances: 47 kOhm for MM and 1 kOhm for MC High Output cartridges.



IN7: XLR MC STEP UP ...

... Is a transformer with balanced inputs and a transfer ratio of 1:20. Recommended for long phono cables.



IN2: MC RCA ...

... Is a MC phono input with two Gain levels. The input impedance can be varied between 60 - 1000 ohms.



IN8: XLR Line Transformer Input...

... Is a balanced line input module with balanced input transformer. The ideal link to USB DACs & music servers.



IN3: MC XLR ...

... Is a balanced phono input for MC cartridges. The gain of this MC input can be switched to two levels and the input impedance varied between 60 – 1000 ohms.



IN9: RCA Line Transformer Input...

... Is a line input module for RCA, with input transformer. Perfect for DACs, servers and similar modern source components.



IN4: LINE IN ...

... Is an additional XLR or RCA line-level input. The selection is made by a switch on the rear panel.



IN6: MC STEP UP ...

... Is a transformer for low impedance MC pickups. The transfer ratio can be switched between Gain 15 and Gain 30.

Output modules

With the optional OCTAVE output modules, the **Phono Module** can be expanded to a complete, powerful sounding full-function preamplifier:



OUT1: RCA STANDARD...

... Is a RCA output, which converts the Phono Module to a passive preamplifier.



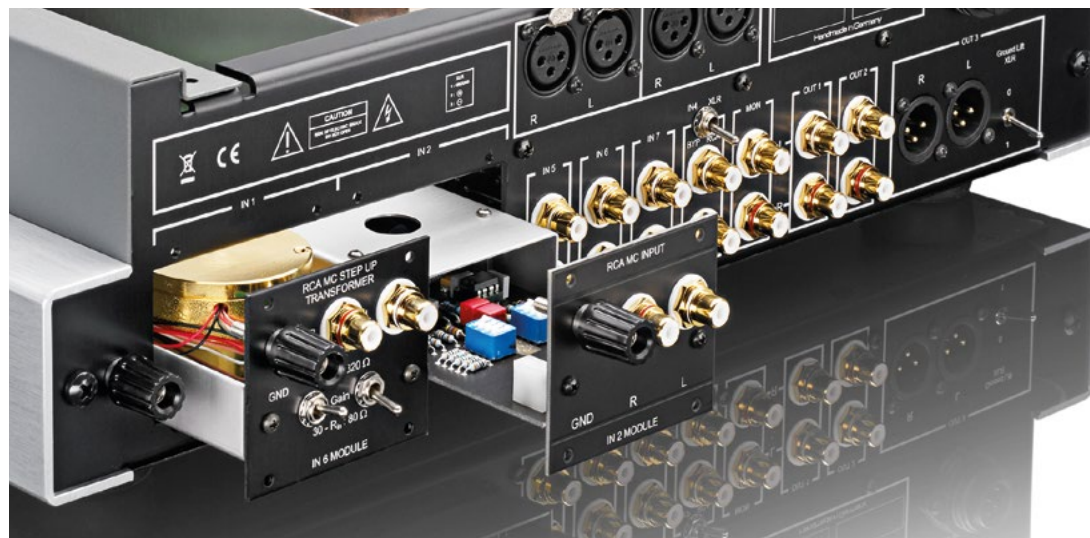
OUT2: DD RCA

DD stands for "Direct Drive": A small preamp with variable output on the board amplifies the signal – thus the power amp can be driven directly.



OUT3: DD XLR

The variable Direct Drive output module is also available in a XLR version. This is especially beneficial when there is a long cable distance to the amplifier.



Example **HP 700**:
It can be upgraded accurately with various add-on modules.

The Result of Experience

Over time we have developed a number of detailed solutions that make OCTAVE valve components the decisive bit better. The main features are summarized below:

ECO Mode

If there is no signal for over ten minutes, the OCTAVE ECO Mode ensures that the heater voltage of the valves and the high voltage for the power amplifiers will shut down. This saves power and prevents expendable heat build-up. When a signal is detected, the circuit is slowly ramped up by the power management.

Power Management

Valves must heat up slowly and in a defined manner in order to perform optimally. OCTAVE installed a special power management for a controlled startup and shut-down of all operating voltages. This significantly prolongs tube life.

BIAS Setting

The BIAS setting ensures that the tubes always operate exactly at the highest level of sound quality. Installing new tubes is trouble-free; they can be easily checked and adjusted without moving the device. Thus, the tonal characteristics are always 100% guaranteed.

Tube Rolling

We have designed the structure of the OCTAVE devices – assuming the same pin configuration is used – so that a tube model change (e.g. **KT 88** to **KT 120**) is easily performed.

Gain (hi-mid-low)

High efficiency speakers present their own distinct challenges. The volume cannot be set sensitively as it needs to be adjusted in the lowest sector of the volume control. To compensate for this shortcoming, the Gain switch can reduce the amplification by a factor of 4. This improves the volume control and simultaneously decreases noise.

In-house transformer winding plant

As the origins of OCTAVE lie in a transformer winding plant, we have long known how to develop the finest transformers ourselves and custom produce them exclusively for our components. Only high-temperature resistant enameled copper wires and low-loss core materials are used.



ECO Mode and Power Management ensure extended lives for valves in OCTAVE devices.



The LED indicator on the display simplifies adjusting the optimum bias current of the tubes.



The remote control ...
...refers to our philosophy
“as simple and consistent as possible.” It controls the volume only, nothing else.

HIGH END made in Germany



OCTAVE Audio

Industriestr. 13
76307 Karlsbad
Germany
Phone +49 (0) 7248 - 327-8
Fax +49 (0) 7248 - 327-9
www.octave.de

Find us on 
www.facebook.com/octave.world

OCTAVE

MODERN CLASSIC